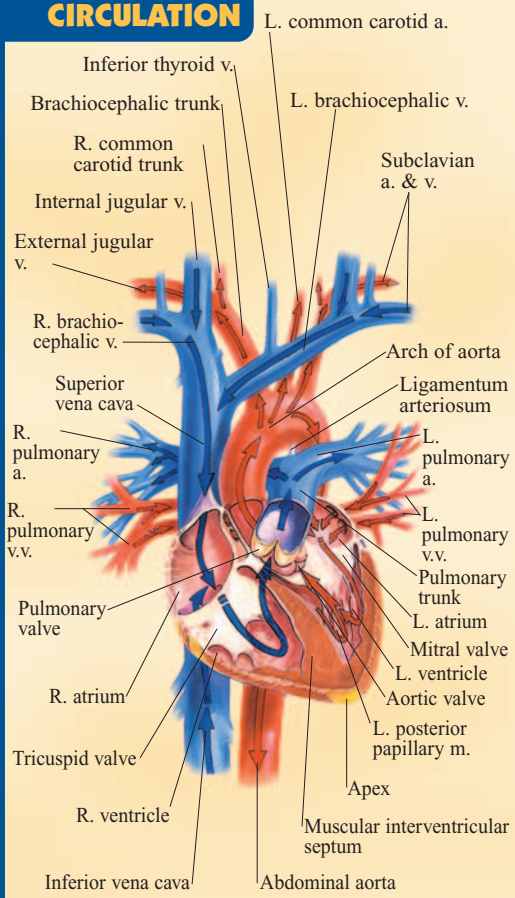
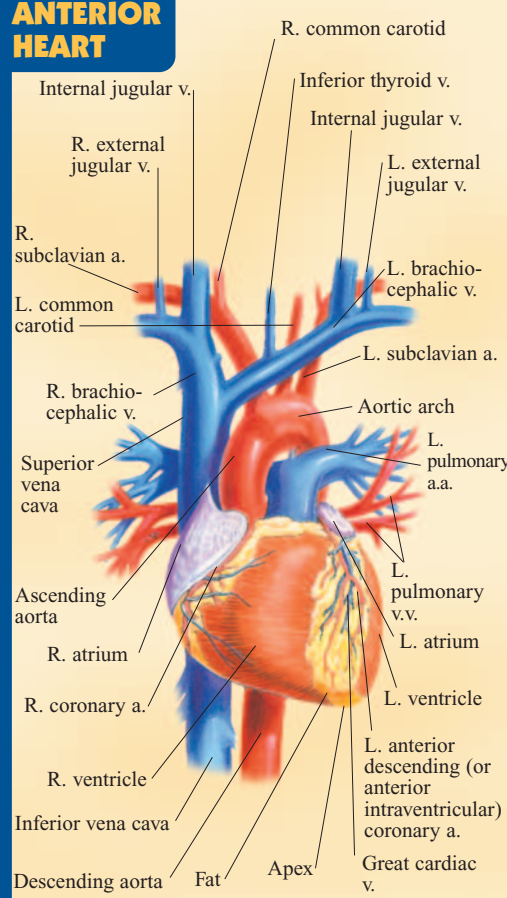


# THE HEART

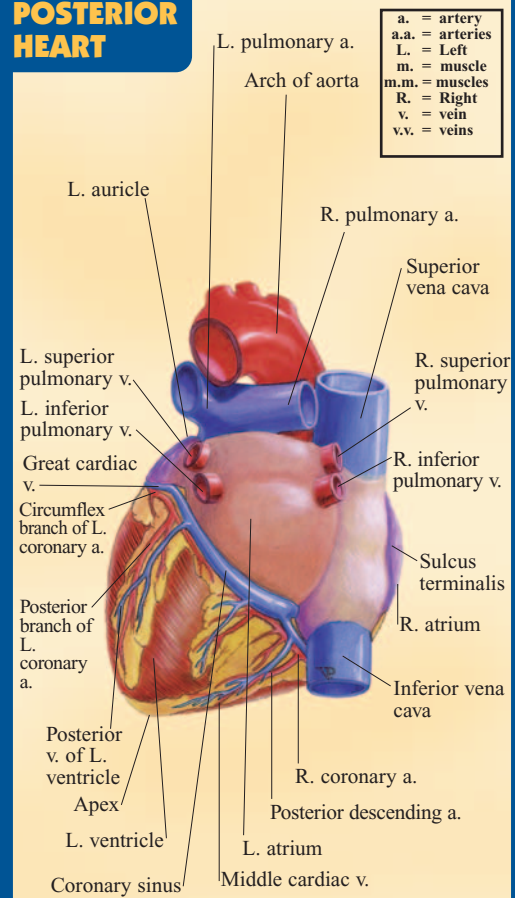
## CIRCULATION



## ANTERIOR HEART

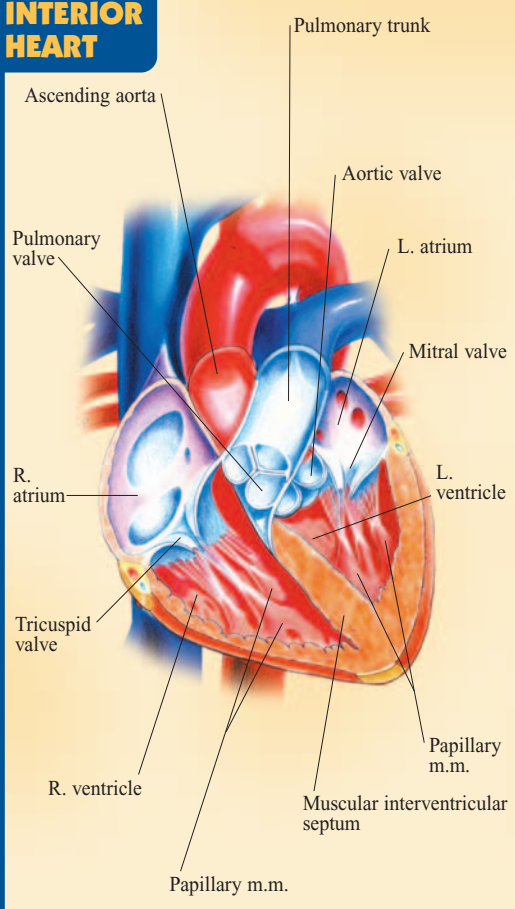


## POSTERIOR HEART

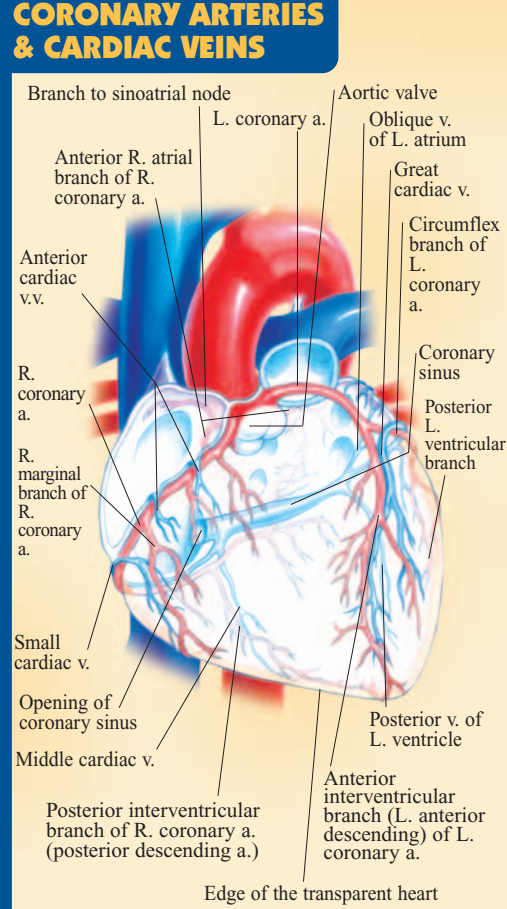


a. = artery  
a.a. = arteries  
L. = Left  
m. = muscle  
m.m. = muscles  
R. = Right  
v. = vein  
v.v. = veins

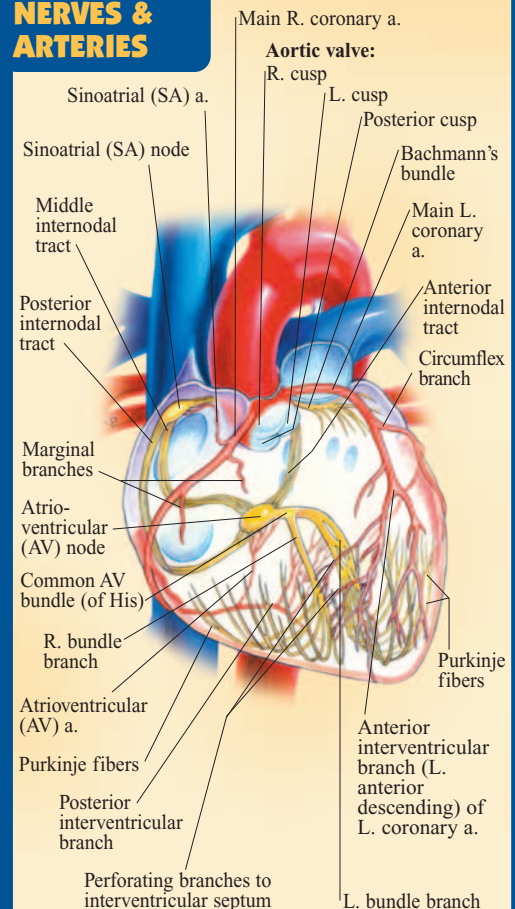
## INTERIOR HEART



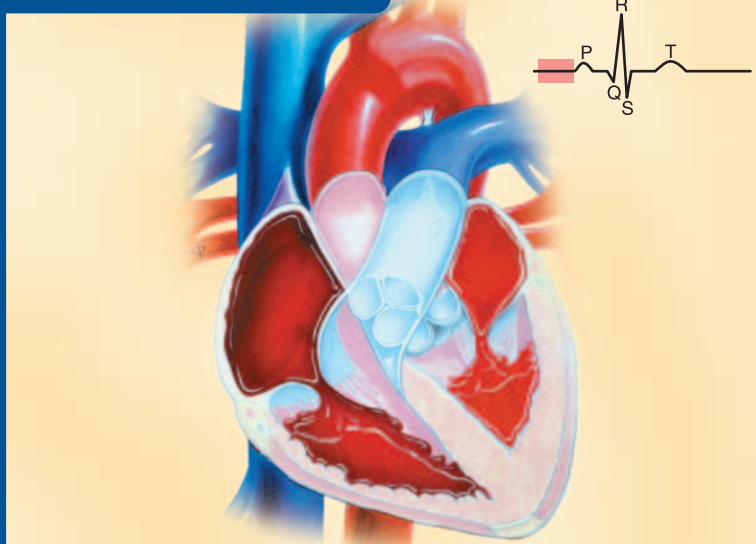
## CORONARY ARTERIES & CARDIAC VEINS



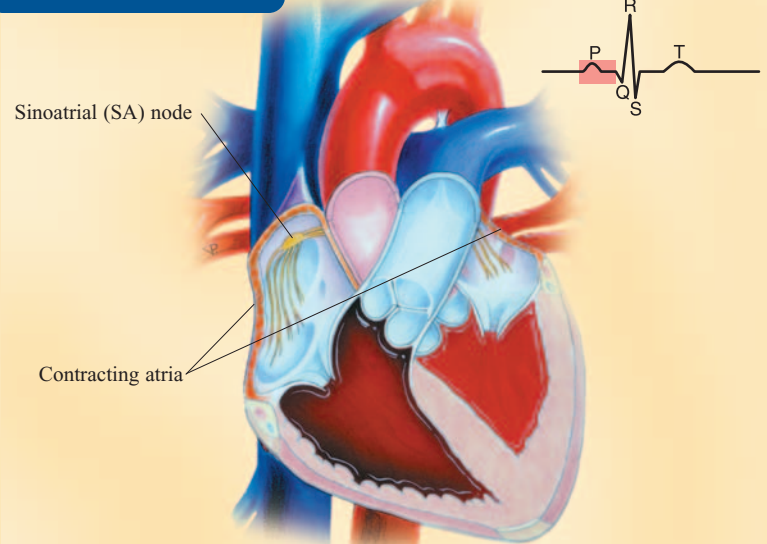
## NERVES & ARTERIES



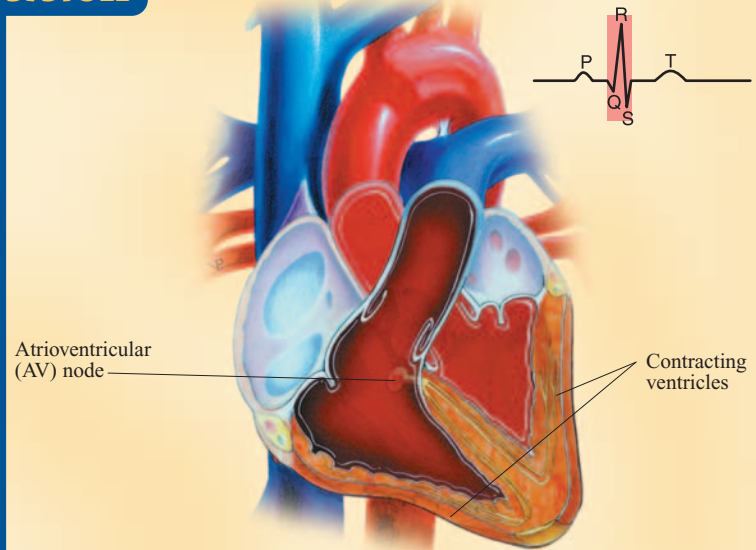
**BEGINNING OF DIASTOLE**



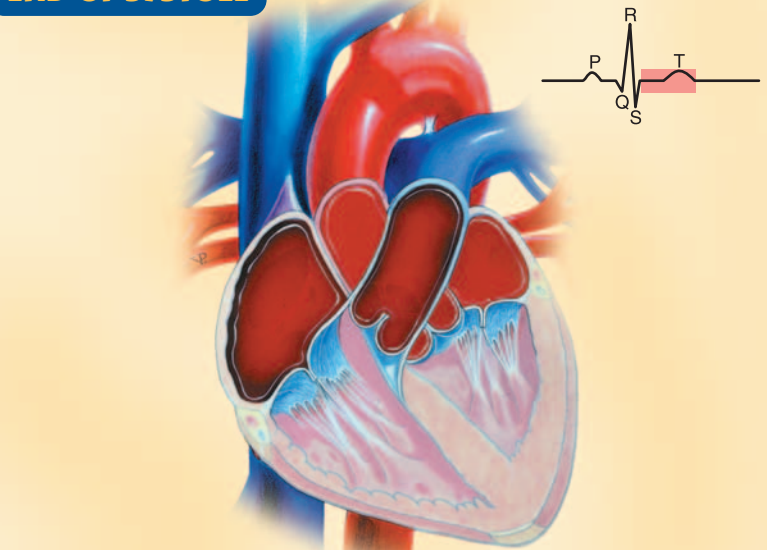
**END OF DIASTOLE**



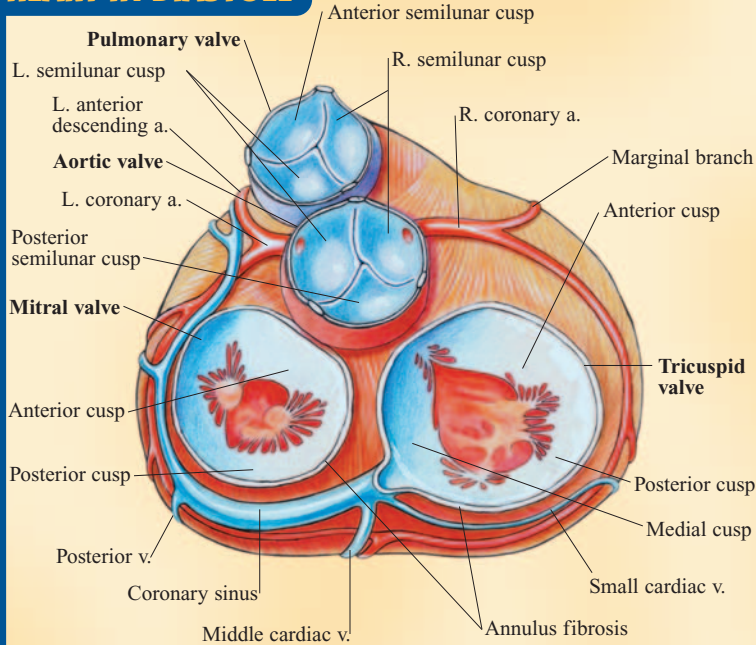
**SYSTOLE**



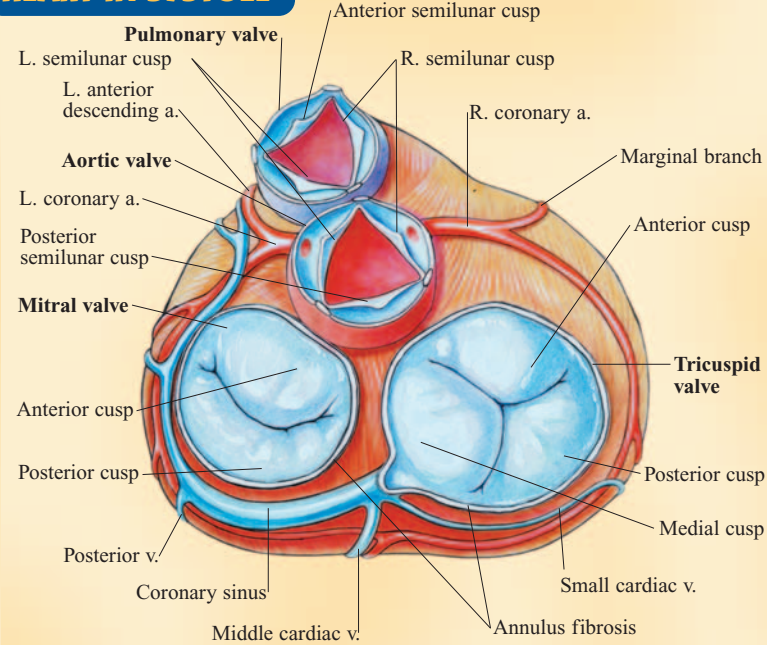
**END OF SYSTOLE**



**HEART IN DIASTOLE**



**HEART IN SYSTOLE**



**NOTE TO STUDENT**

Use this comprehensive study guide in the classroom, in the gym, at home or anywhere you need complete heart information. This guide is not designed to take the place of classroom attendance.

All rights reserved. No part of this publication may be reproduced or transmitted in any form, or by any means, electronic or mechanical, including photocopy, recording, or any information storage and retrieval system, without written permission from the publisher. ©2000 BarCharts Inc. Boca Raton, FL. 0608

**CREDITS**

Images © Vincent Perez perezstudio.com

free downloads & hundreds of titles at [quickstudy.com](http://quickstudy.com)

Customer Hotline # 1.800.230.9522

U.S. \$3.95

CAN. \$5.95

ISBN-13: 978-142320727-6

ISBN-10: 142320727-0

5 0395



9 781423 207276



6 54614 00727 8