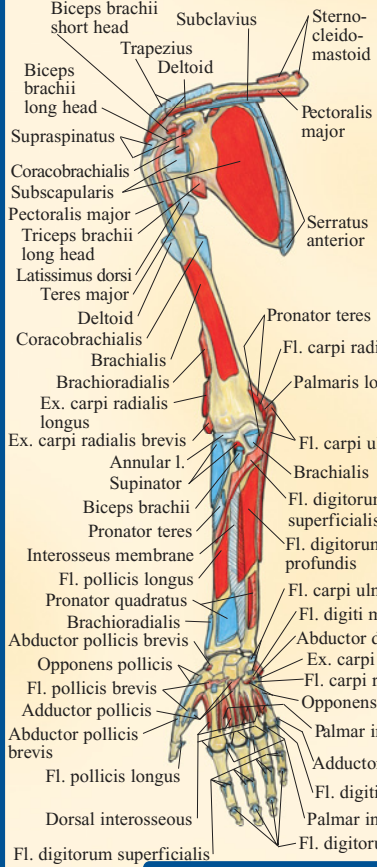




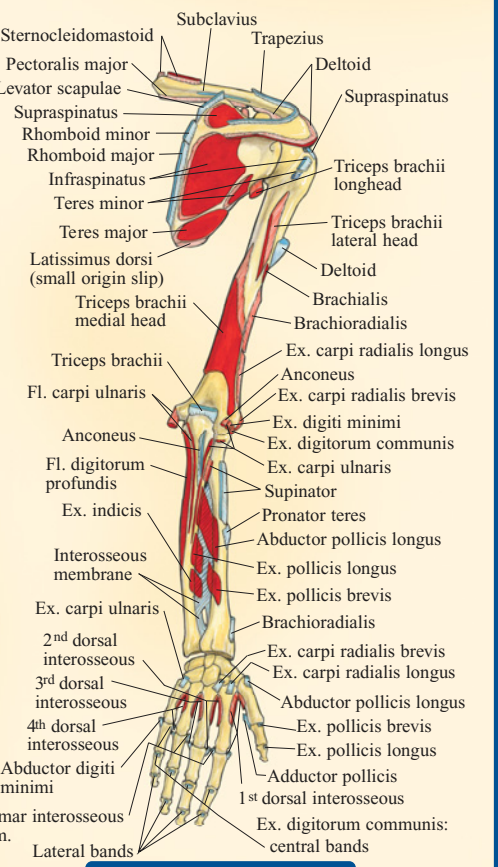
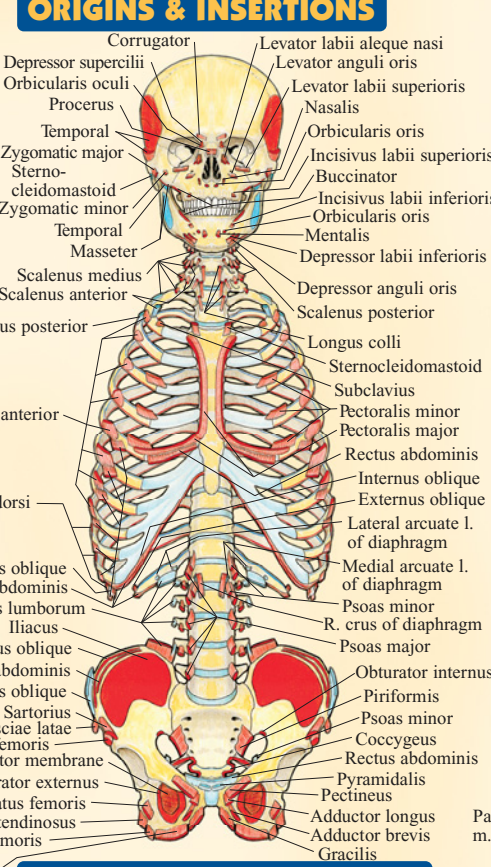
ANATOMY 2

INCLUDES DEEP AND POSTERIOR ANATOMY AND MANY NEW STRUCTURES

ORIGINS & INSERTIONS



- ** = cut
- a. = artery
- a.a. = arteries
- ex. = extensor
- fl. = flexor
- L. = Left
- l. = ligament
- LI. = ligaments
- (Li.) = large intestine
- m. = muscle
- m.m. = muscles
- (s.i.) = small intestine
- n. = nerve
- n.n. = nerves
- R. = Right
- v. = vein
- v.v. = veins
- red = origins
- blue = insertions



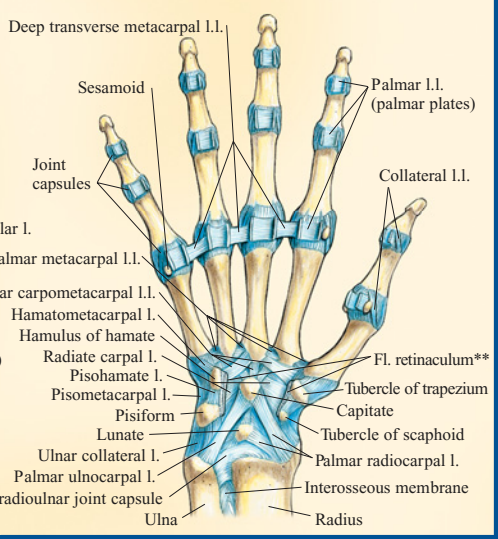
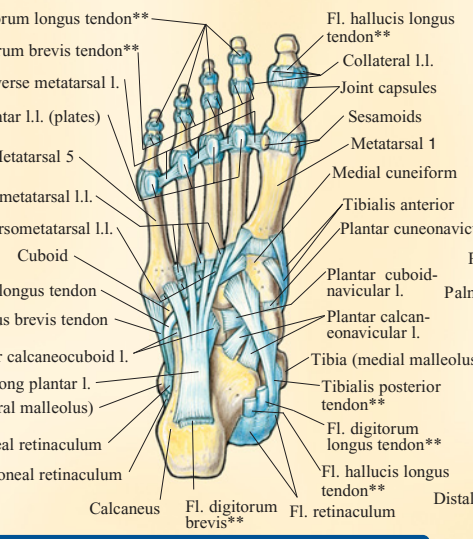
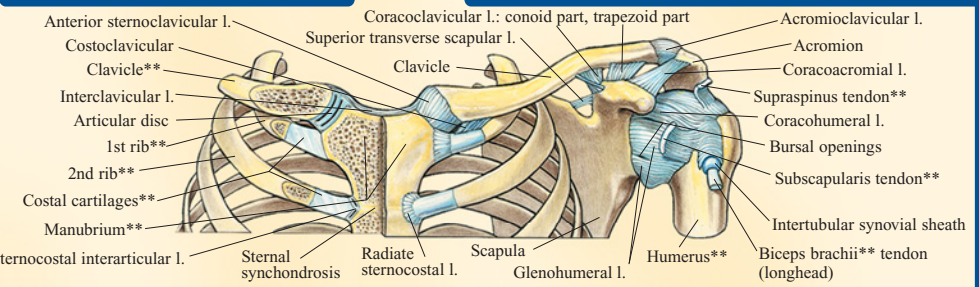
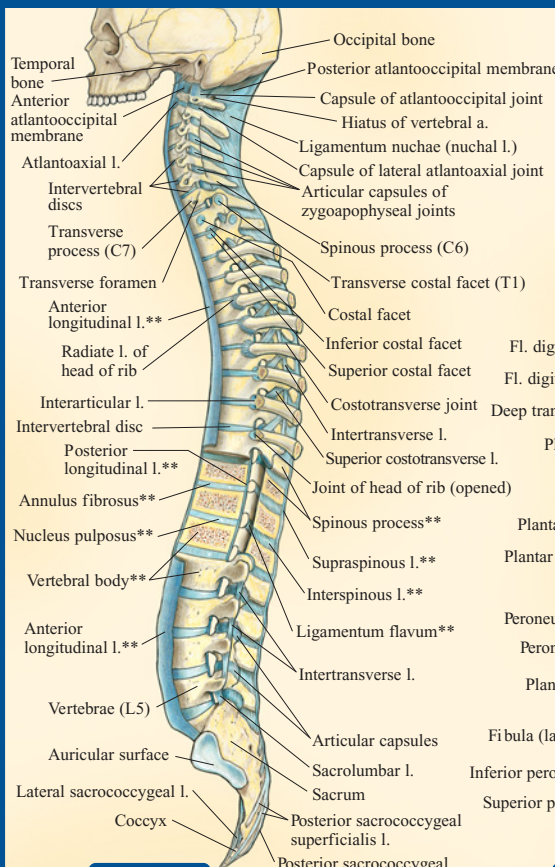
ARM ANTERIOR

TRUNK & HEAD ANTERIOR

ARM POSTERIOR

JOINTS & LIGAMENTS

STERNOCLAVICULAR & SHOULDER

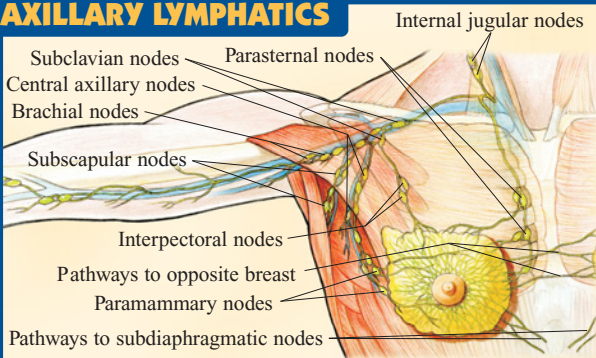


SPINE

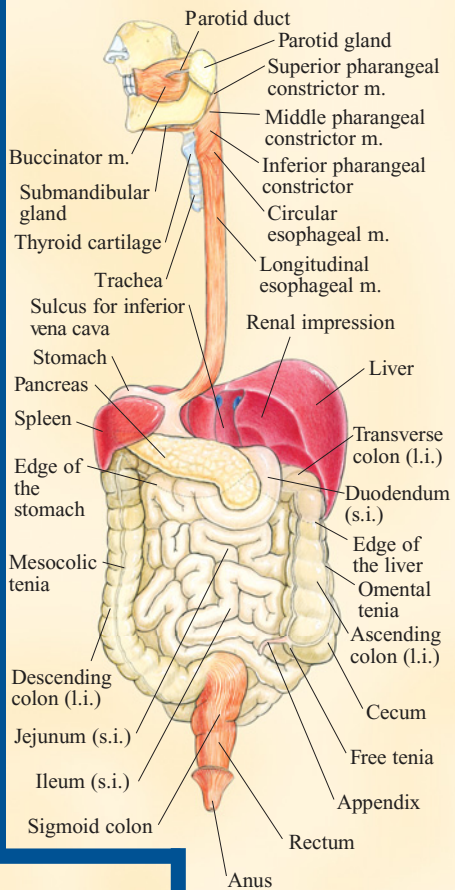
RIGHT FOOT INFERIOR VIEW

WRIST AND HAND PALMAR VIEW

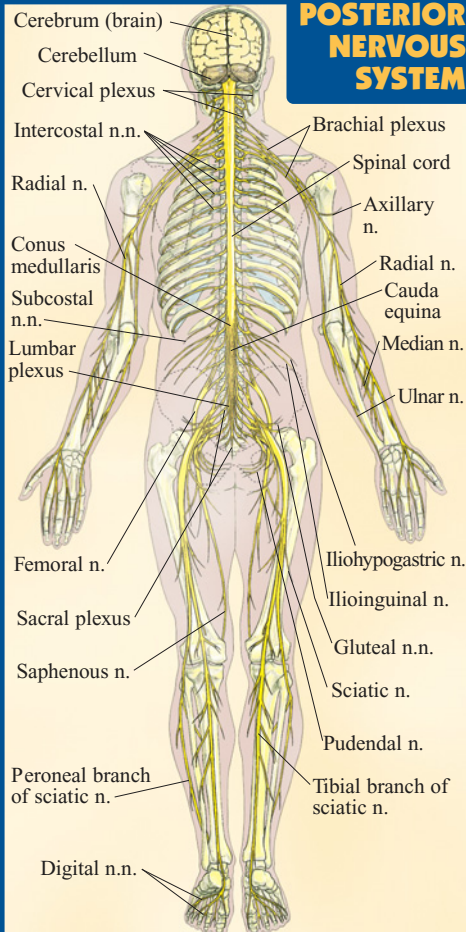
AXILLARY LYMPHATICS



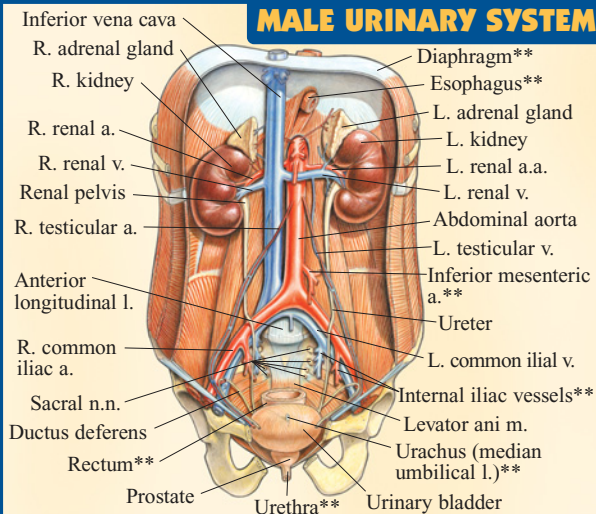
POSTERIOR DIGESTIVE SYSTEM



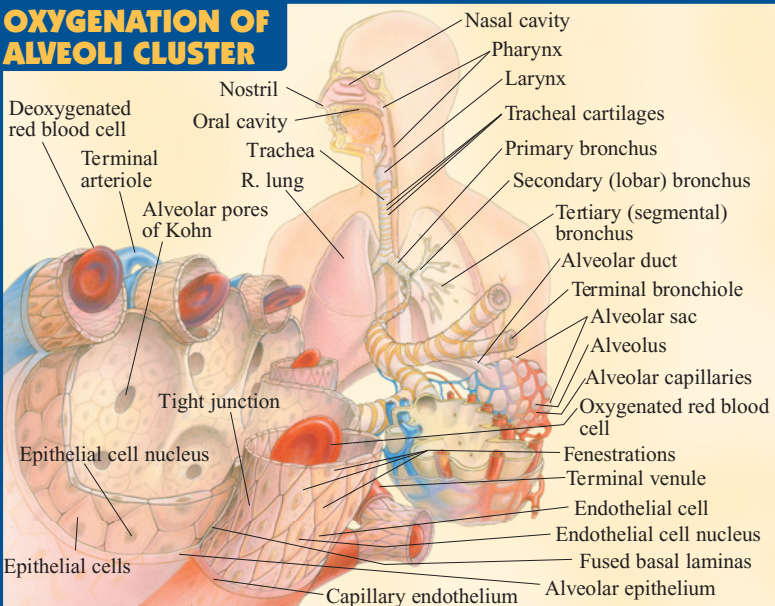
POSTERIOR NERVOUS SYSTEM



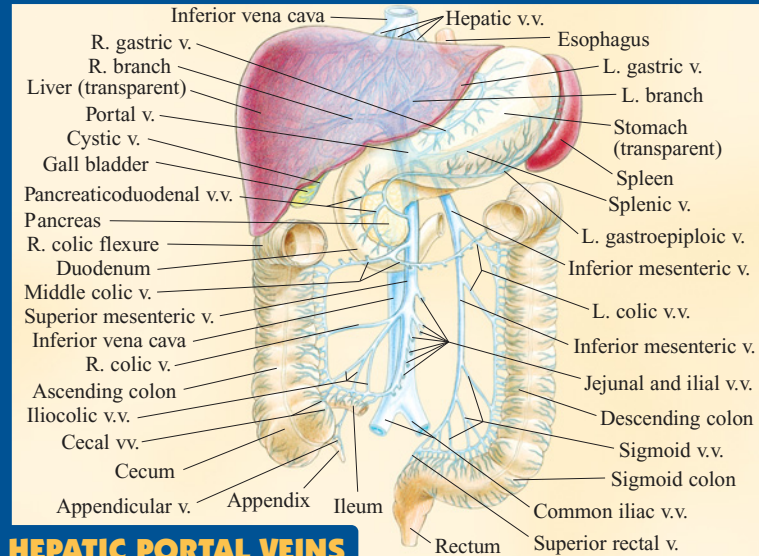
MALE URINARY SYSTEM



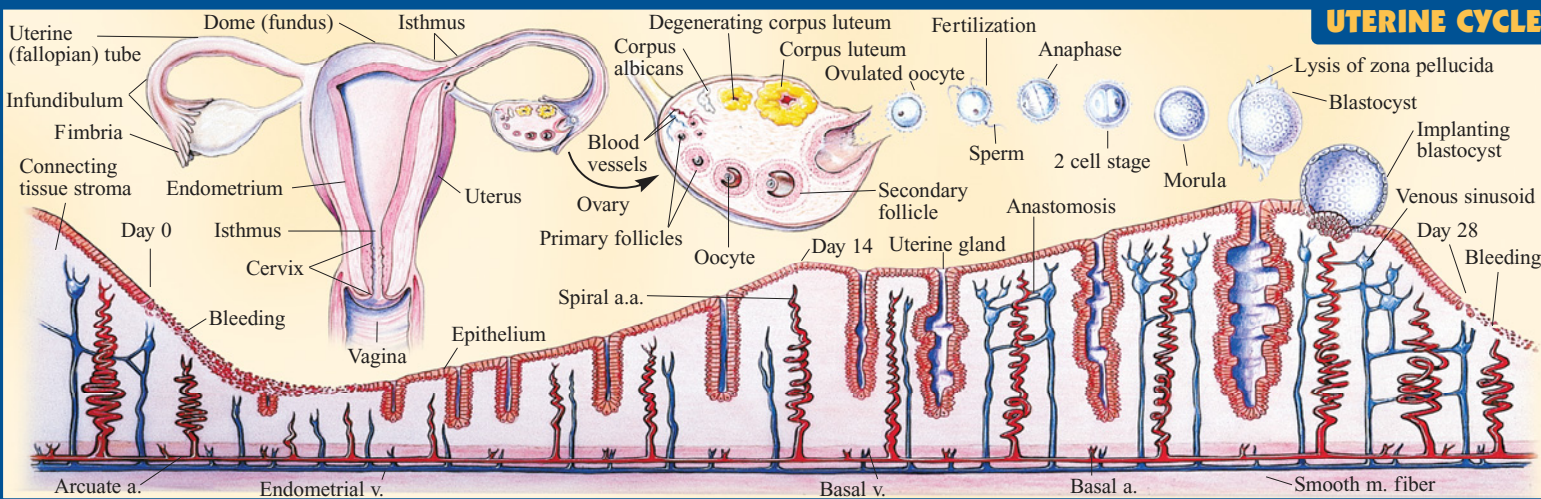
OXYGENATION OF ALVEOLI CLUSTER



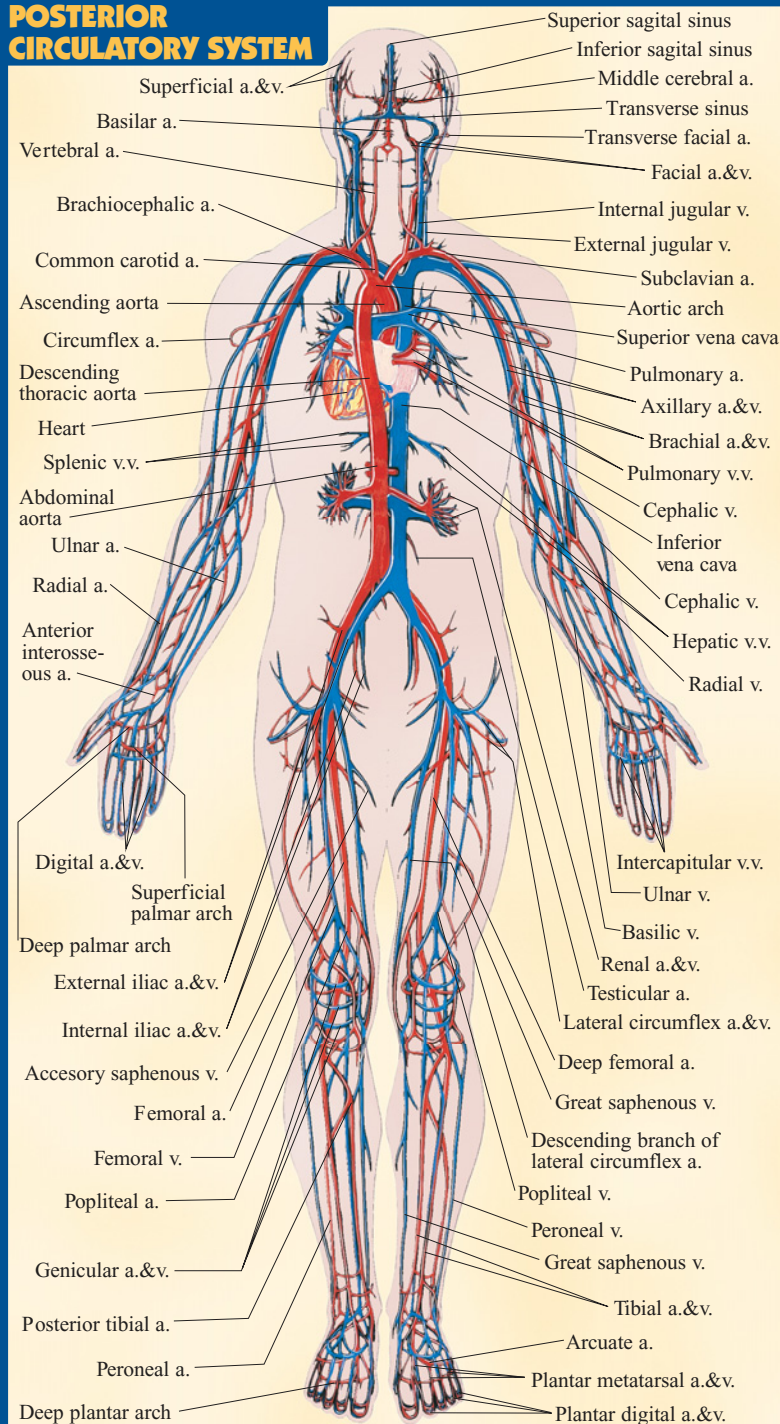
HEPATIC PORTAL VEINS



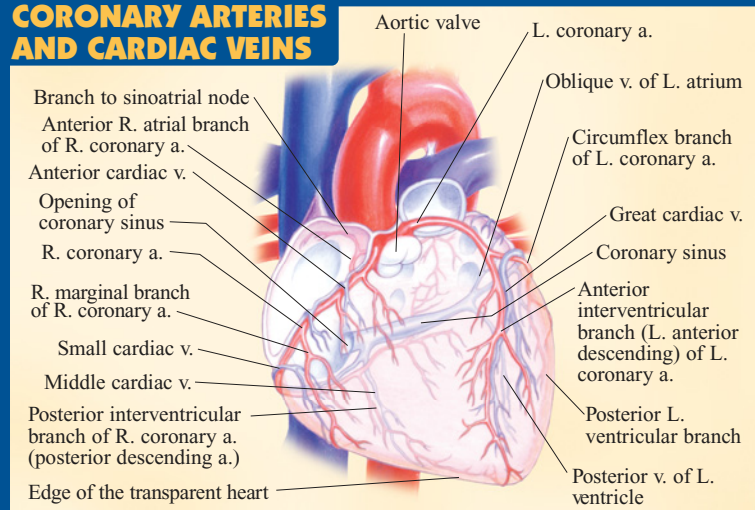
UTERINE CYCLE



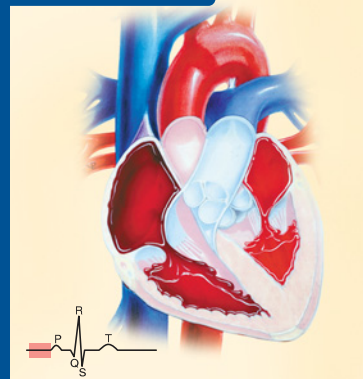
POSTERIOR CIRCULATORY SYSTEM



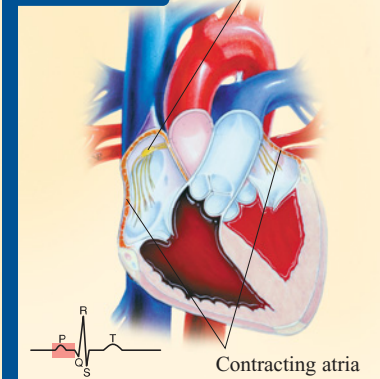
CORONARY ARTERIES AND CARDIAC VEINS



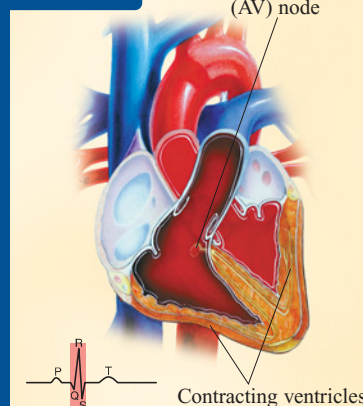
BEGINNING OF DIASTOLE



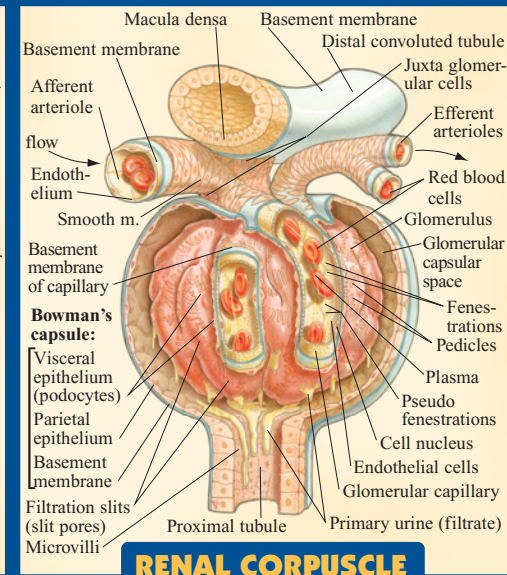
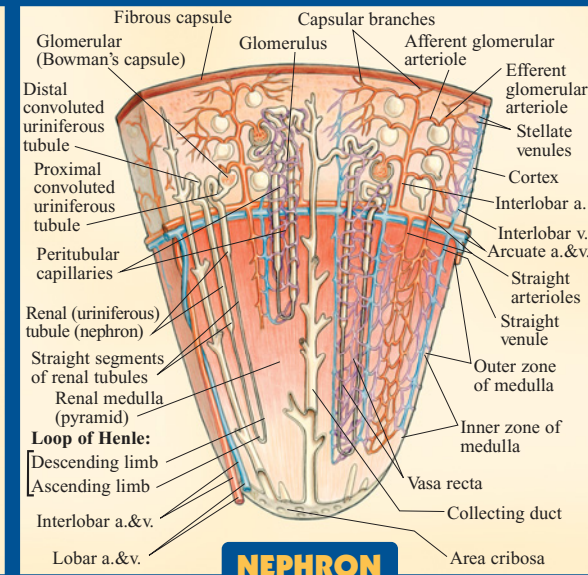
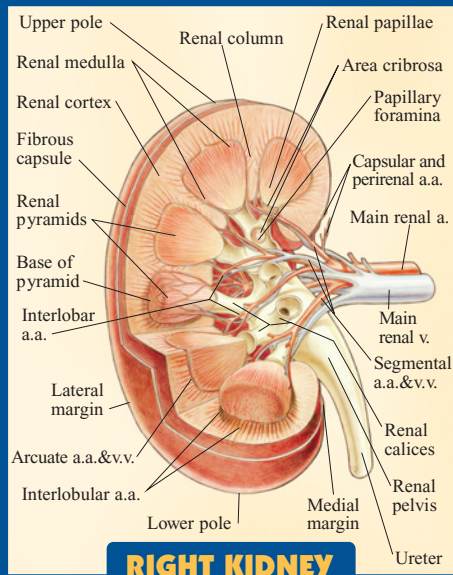
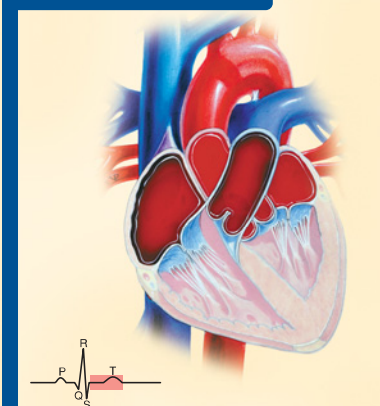
END OF DIASTOLE



SYSTOLE



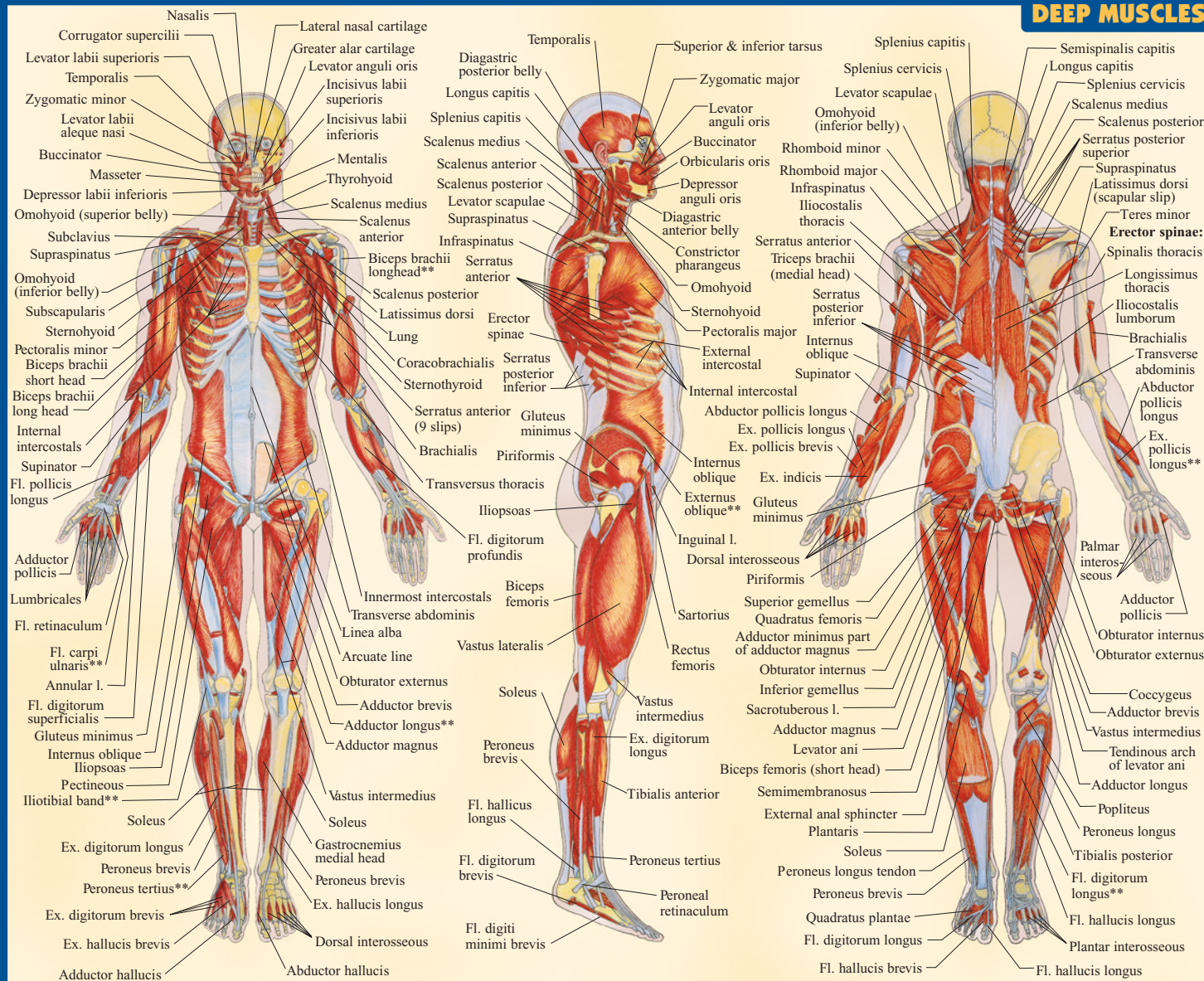
END OF SYSTOLE



RIGHT KIDNEY

NEPHRON

RENAL CORPUSCLE

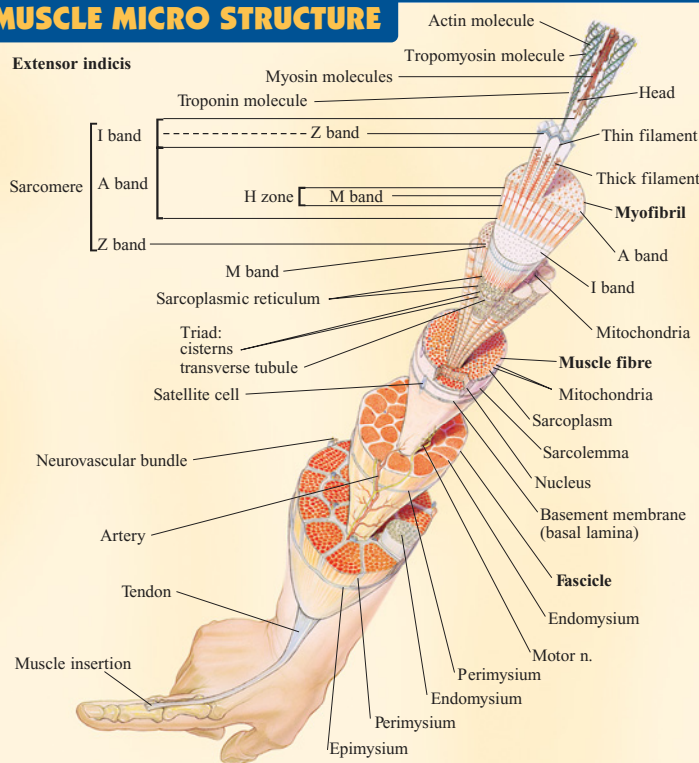


ANTERIOR

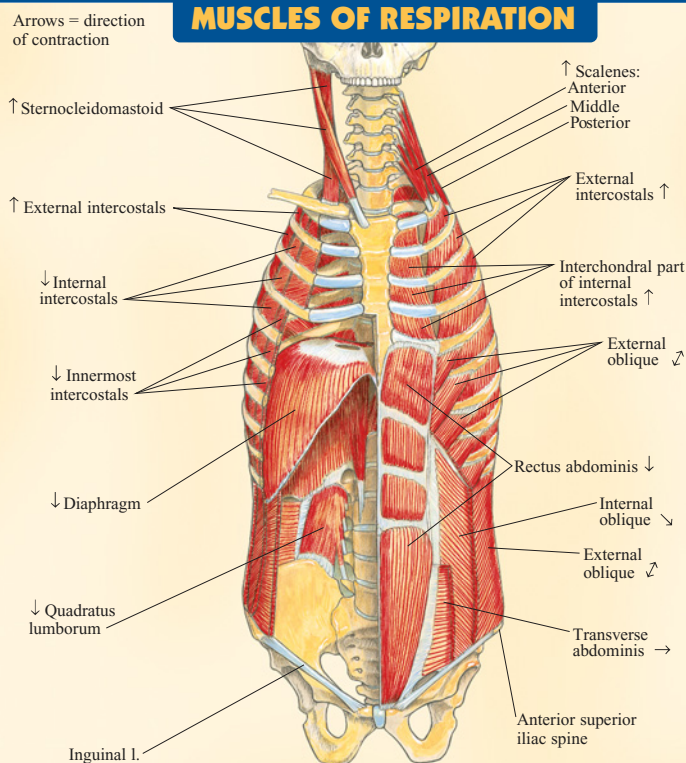
LATERAL

POSTERIOR

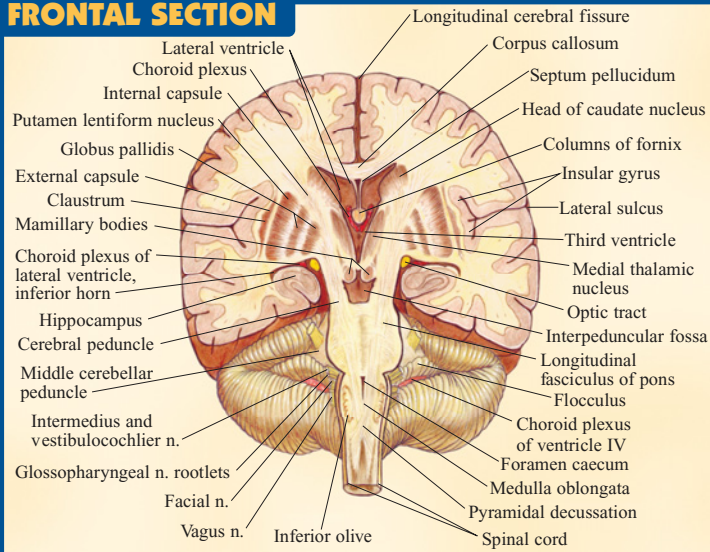
MUSCLE MICRO STRUCTURE



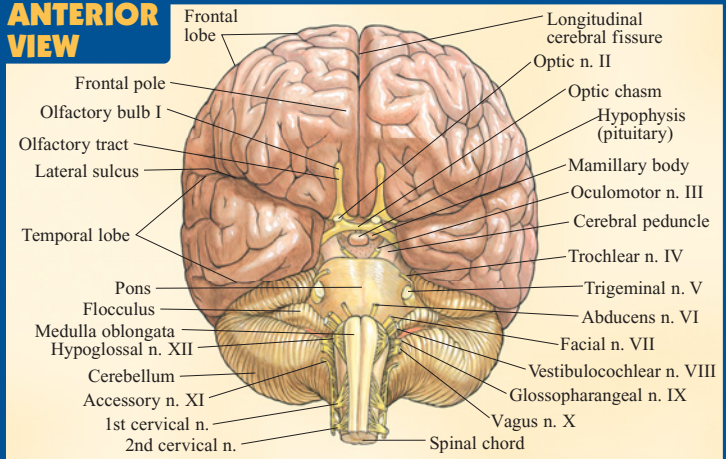
MUSCLES OF RESPIRATION



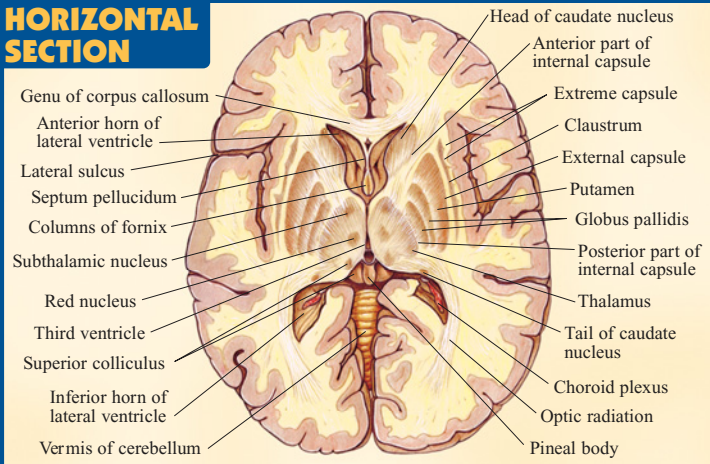
FRONTAL SECTION



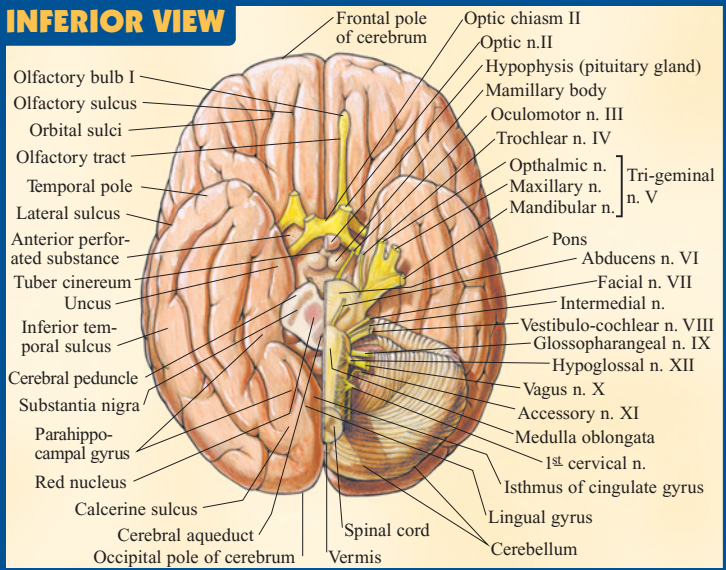
ANTERIOR VIEW



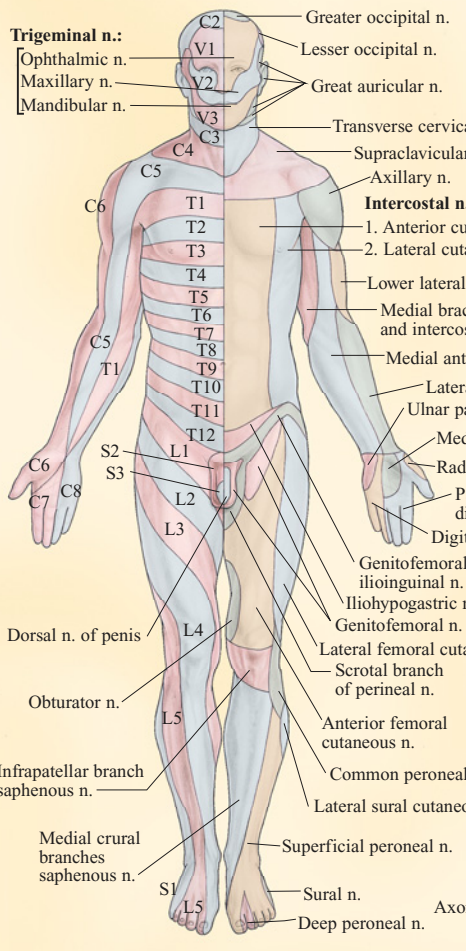
HORIZONTAL SECTION



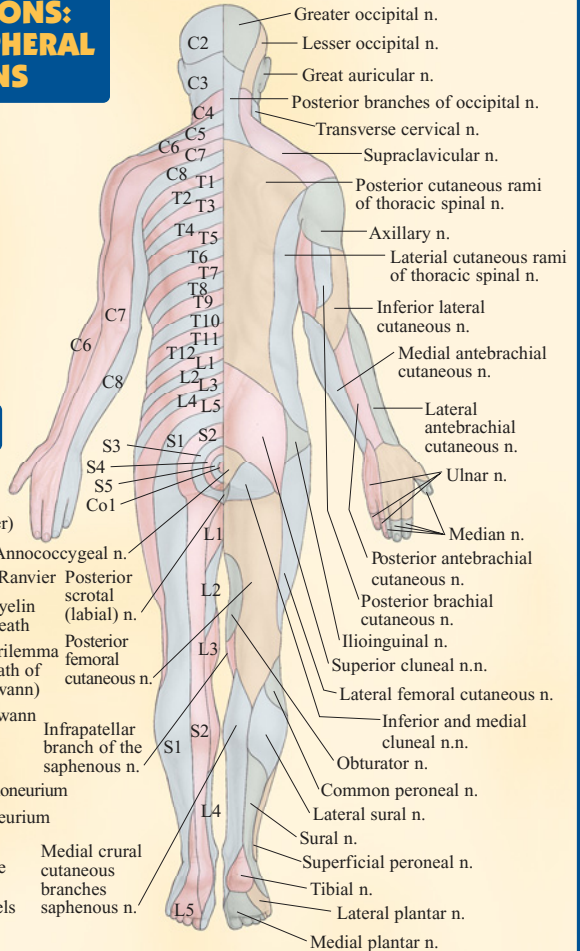
INFERIOR VIEW



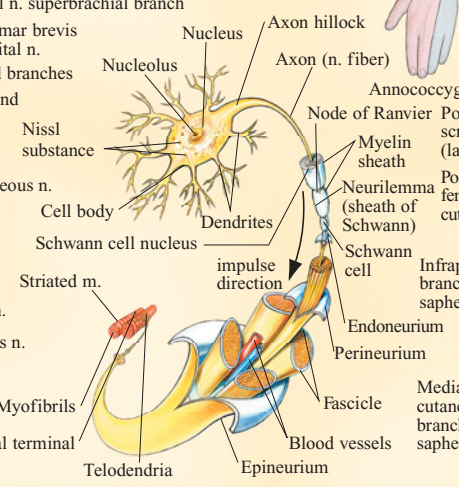
CUTANEOUS INNERVATIONS: DERMATOMES AND PERIPHERAL NERVE DISTRIBUTIONS



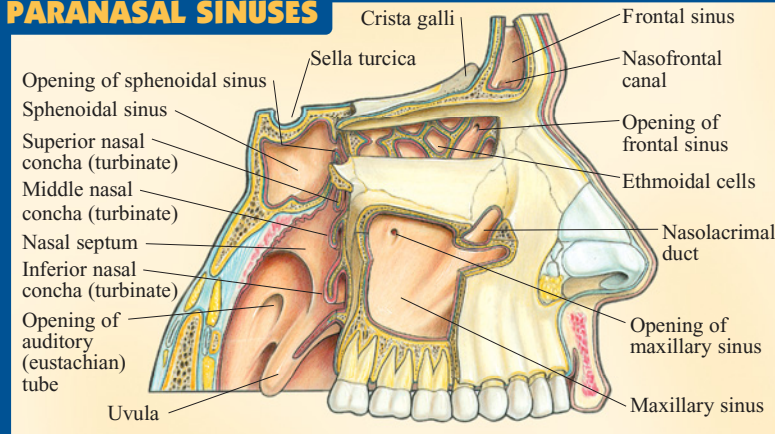
V1 = Ophthalmic nerve
 V2 = Maxillary nerve
 V3 = Mandibular nerve
 C = Cervical
 T = Thoracic
 L = Lumbar
 S = Sacrum
 Co = Coccyx



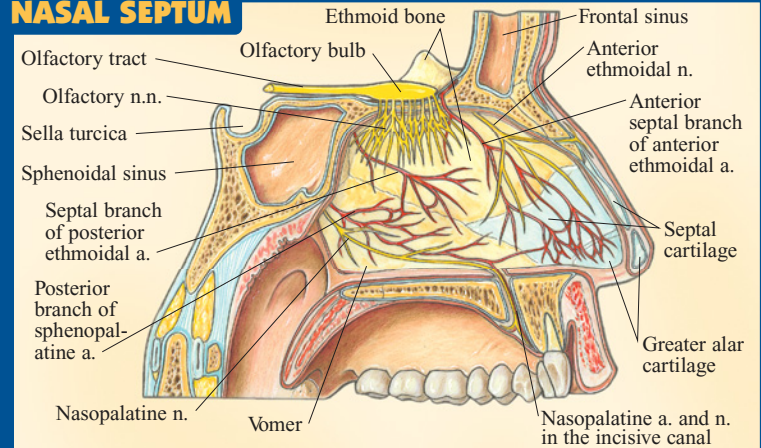
NERVE STRUCTURE



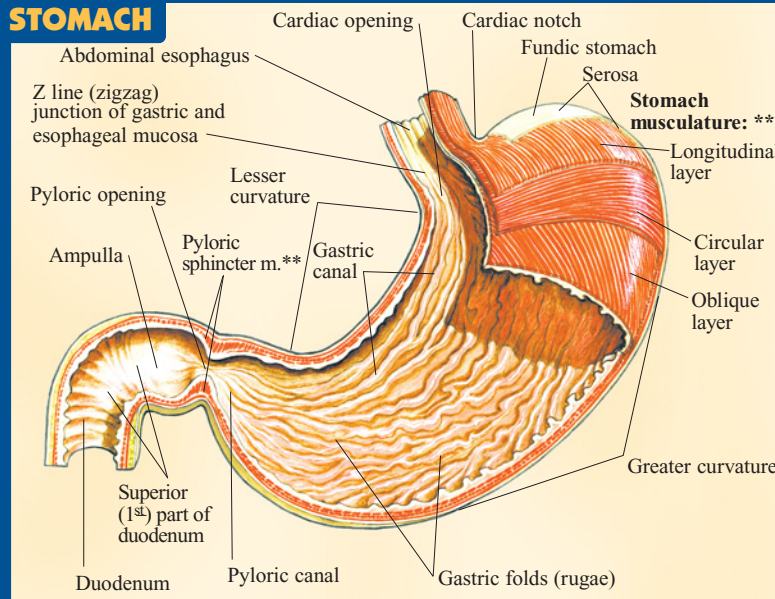
PARANASAL SINUSES



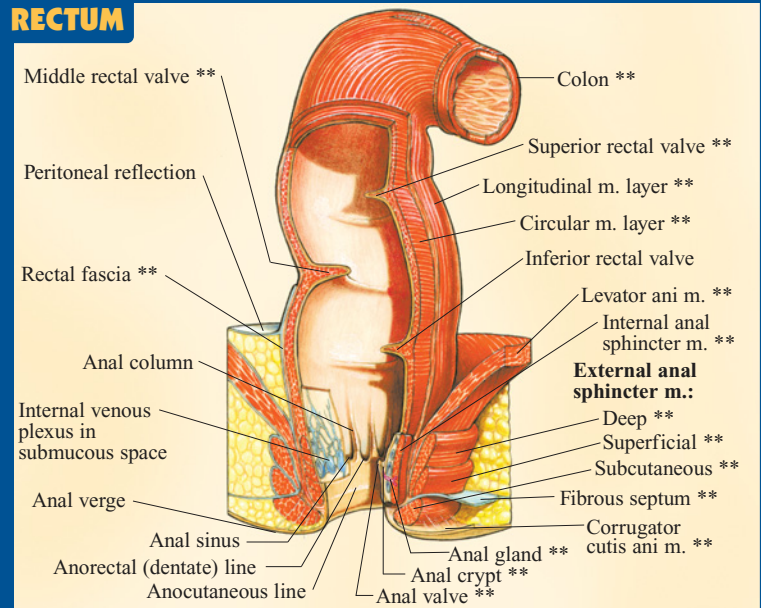
NASAL SEPTUM



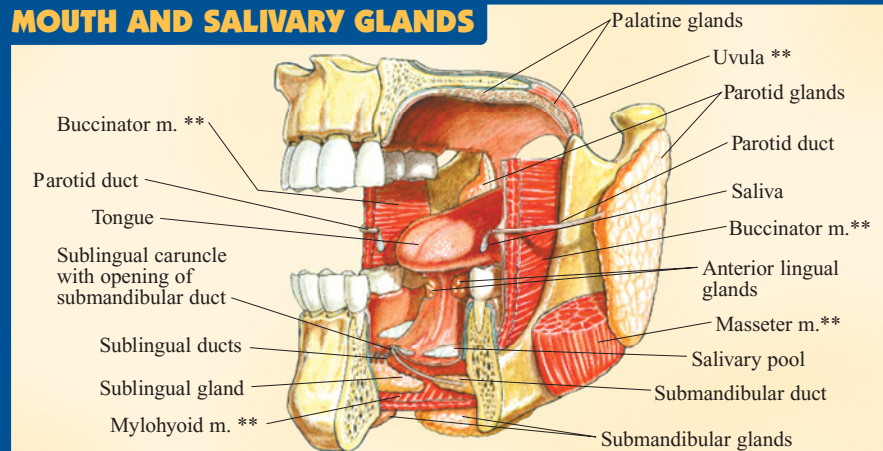
STOMACH



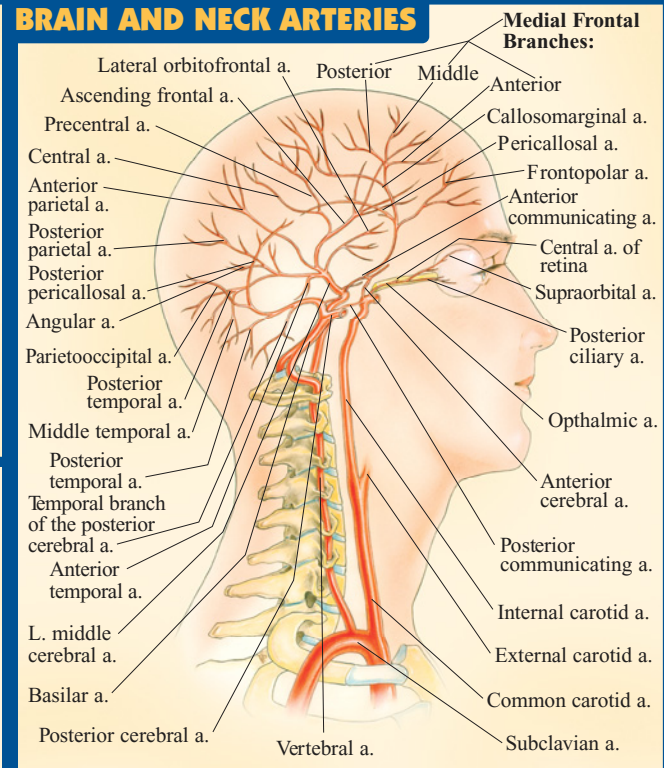
RECTUM



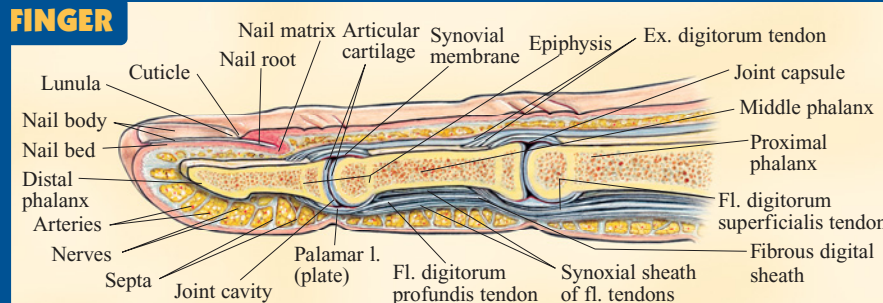
MOUTH AND SALIVARY GLANDS



BRAIN AND NECK ARTERIES



FINGER



NOTE TO STUDENT

Use this comprehensive study guide in the classroom, in the gym, at home or anywhere you need complete anatomical information. This guide is not designed to take the place of classroom attendance.

CREDITS
©Vincent Perez
perezstudio.com

Customer Hotline: 1.800.230.9522
U.S. \$5.95 / CAN.\$8.95
March 2005

ISBN 142320009-8



9 781423 200093



6

All rights reserved. No part of this publication may be reproduced or transmitted in any form, or by any means, electronic or mechanical, including photocopy, recording, or any information storage and retrieval system, without written permission from the publisher.
©2003, 2005 BarCharts Inc. Boca Raton, FL.

Want more? See the entire series of QuickStudy® anatomical guides on our Web site, or use it to find a local QuickStudy® retailer.

hundreds of titles at
quickstudy.com



6 54614 00009 5